



CERTIFICATE OF ANALYSIS

20 Martin Ross Avenue, North York, ON, M3J 2K8, CANADA
Tel: (416) 665-9696, Fax: (416) 665-4439
Email: orders.trc@lgcgroup.com Website: www.trc-canada.com

1. Identification

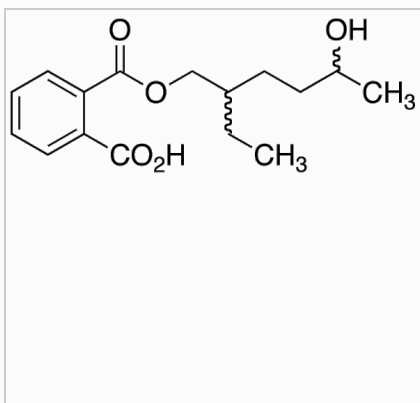
Catalogue Number: M542510

CAS Number: 40321-99-1

Product: Mono(2-ethyl-5-hydroxyhexyl) Phthalate (Mixture of Diastereomers)

Synonym: Mono-2-ethyl-5-hydroxyhexyl Phthalate; 1,2-Benzenedicarboxylic Acid Mono(2-ethyl-5-hydroxyhexyl) Ester; 1,2-Benzenedicarboxylic Acid 1-(2-Ethyl-5-hydroxyhexyl) Ester; 5-OH-MEHP; MEHHP;

Structure:



Molecular Formula:

C₁₆H₂₂O₅

Molecular weight:

294.34

Source of Product:

Synthetic

Solubility:

Chloroform (Sparingly),
DMSO (Slightly), Ethyl Acetate
(Slightly), Methanol (Sli

Lot Number: 7-WEN-126-1

Purity: 97%

Shipping Condition: This Product Is Stable To Be Shipped At Room Temperature

Storage Condition: 4°C

2. Warning

Warning 1:

Warning 2:

Warning 3:

3. Analytical Information

Tests:	Specifications:	Results:
Appearance	Colourless to Brown Thick Oil	Clear Pale Brown Thick Oil
NMR	Conforms to Structure	Conforms
Elemental Analysis	Conforms	%C: 63.91, %H: 7.76
HPLC Purity	Report Result	95.09% (205 nm)
MS	Conforms to Structure	Conforms

Additional Information: Contains: ~4.1% Dichloromethane

Purity is based on the analytical results of the tests performed. NMR and Elemental Analysis (if available) may have an accuracy of ± 2%. Isotopic purity is based on mass distribution observed. The contents of the specifications are subject to change without advance notice, and the specification values displayed here are the most up to date values.

4. Signatures

Reviewed By	Reviewed By	C of A Approved By	Test Date	Retest Date
Sarbjit Kaur	Toni Rantanen	Chanell Chu	6/22/2022	6/20/2026